

"A DRIFT"
 LYRICS - BOBBY KNOX
 MUSIC - D. COMFORT / C. BECHLER

Handwritten musical score for the song "A Drift". The score is written on a grand staff (treble and bass clefs) in the key of G major (one sharp) and common time (C). The lyrics are written below the notes, and various chords are indicated by circled letters (A, E, D, C, G, B) above the staff. The score includes a first ending and a second ending. The lyrics are: "I'm A - DRIFT, LOST IN TIME, BARE - LY WITH MY SEE, I CAN'T HEAR, WITH MY HOLD - ING MY MIND, SHE HAS GONE, FROM MY EYES FULL OF TEARS, AND MY EARS, FULL OF LIFE. SHE HAS GONE, FROM MY HOUSE, TAK - EN SOUNDS, SCREAM - ING DREAMS, THUN DRING DOWN, CRASH - ING HALF RUB - BLE OF MY SOUL, AND I FEEL MY PLACE IS ALL A - ROUND AND THE FI - BER OF MY NO - WHERE FROM NOW ON I CAN'T BE - ING IS DIS - SOLV - ING LIKE A WISH DREAM, AL - WAYS DY - ING, EV - ER DY - ING, GONE."

B

B7 (b5) #9 [BAND SOLO] OPEN

7: # (4/4) E (12/8) PEDAL

C

I B- (4x's)

II (2x's)

III (2x's)

PEDAL TO START (D)

D

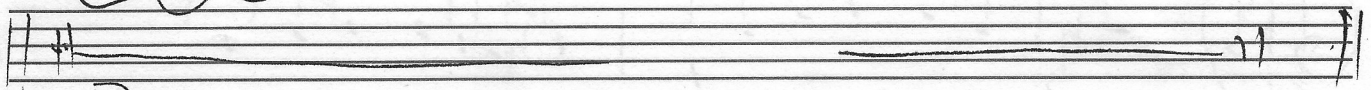
E7(b9)

F#7(b9)

REPEAT A(1)(2)(3)

"ADRIET" (SUPPLEMENT TO OTHER COPY)

(A) (1) (2)



(B)

Handwritten musical notation for section B, including a treble clef, a key signature of one sharp (F#), and a 4/4 time signature. The notation includes notes and rests, with annotations: "B PEDAL" and "OPEN" circled. A large, shaded, triangular graphic is drawn over the notes, labeled "(GRAPHIC OF DEVELOPEMENT) (CUMAX)".

Handwritten musical notation for section C, starting with a bass clef and a key signature of one sharp (F#). The notation includes notes and rests, with annotations: "I 4x's" and "II 2x's".

Handwritten musical notation for section C, continuing from the previous staff with notes and rests.

Handwritten musical notation for section C, continuing with notes and rests, and an annotation: "III 2x's THEN OPEN".

Handwritten musical notation for section C, continuing with notes and rests.

Handwritten musical notation for section C, continuing with notes and rests, and an annotation: "PEDAL TO START (D)".

Handwritten musical notation for section C, continuing with notes and rests, and an annotation: "(D)".

